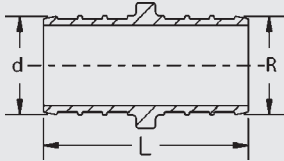
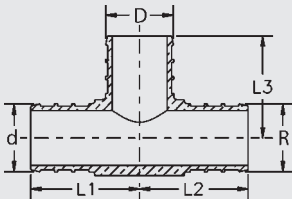


Dimensional Documentation

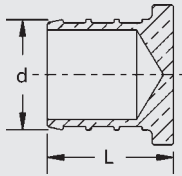
PEX Crimp Fittings



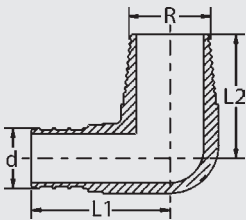
Brass PEX Crimp Couplings			
Stock Code	d x R (size)	L (Inches)	L (mm)
40422	3/8" x 3/8" PEX Crimp	1.39	35.3
40432	1/2" x 3/8" PEX Crimp	1.39	35.3
40433	1/2" X 1/2" PEX Crimp	1.39	35.3
40443	3/4" X 1/2" PEX Crimp	1.39	35.3
40444	3/4" X 3/4" PEX Crimp	1.39	35.3
40454	1" X 3/4" PEX Crimp	1.57	39.9
40455	1" X 1" PEX Crimp	1.75	44.5



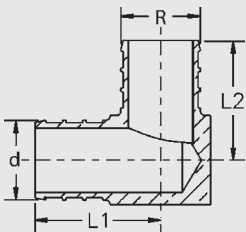
Brass PEX Crimp Tees							
Stock Code	d x R x D (size)	L1 (in)	L1 (mm)	L2 (in)	L2 (mm)	L3 (in)	L3 (mm)
40500	3/8" x 3/8" x 3/8" PEX Crimp	0.89	22.7	0.89	22.7	0.88	22.4
40520	1/2" x 1/2" x 1/2" PEX Crimp	0.95	24.1	0.95	24.1	0.88	22.4
40540	3/4" x 3/4" x 3/4" PEX Crimp	1.07	27.2	1.07	27.2	1.00	25.5
40560	1" x 1" x 1" PEX Crimp	1.38	35.2	1.38	35.2	1.28	32.5



Brass PEX Crimp Test Plugs			
Stock Code	d (size)	L (Inches)	L (mm)
40702	3/8" PEX Crimp	0.76	19.3
40723	1/2" PEX Crimp	0.76	19.3
40744	3/4" PEX Crimp	0.76	19.3
40765	1" PEX Crimp	0.94	23.9



Brass PEX Crimp X Male NPT Elbows					
Stock Code	d x R (size)	L1 (in)	L1 (mm)	L2 (in)	L2 (mm)
40222	3/8" PEX Crimp x 3/8" M NPT	1.03	26.2	0.96	24.4
40232	1/2" PEX Crimp x 3/8" M NPT	1.03	26.2	0.96	24.4
40221	1/2" PEX Crimp x 1/2" M NPT	1.11	28.2	1.19	30.2
40223	3/4" PEX Crimp x 3/4" M NPT	1.54	39.1	1.38	35.1



Brass PEX Crimp Elbows					
Stock Code	d x R (size)	L1 (in)	L1 (mm)	L2 (in)	L2 (mm)
48222	3/8" x 3/8" PEX Crimp	0.89	22.7	0.87	22.2
48233	1/2" x 1/2" PEX Crimp	0.95	24.1	0.87	22.2
48243	3/4" x 1/2" PEX Crimp	1.07	27.3	1.00	25.5
48244	3/4" x 3/4" PEX Crimp	1.06	26.9	1.00	25.5
48255	1" x 1" PEX Crimp	1.38	35.1	1.28	32.5

VIEGA ...The global leader in plumbing and heating systems.

301 N. Main, Floor 9 • Wichita, KS 67202 • Ph: 877-843-4262 • Fax: 316-425-7618 • E-Mail: service@viega.com • www.viega-na.com
 SP-PFPC-0908